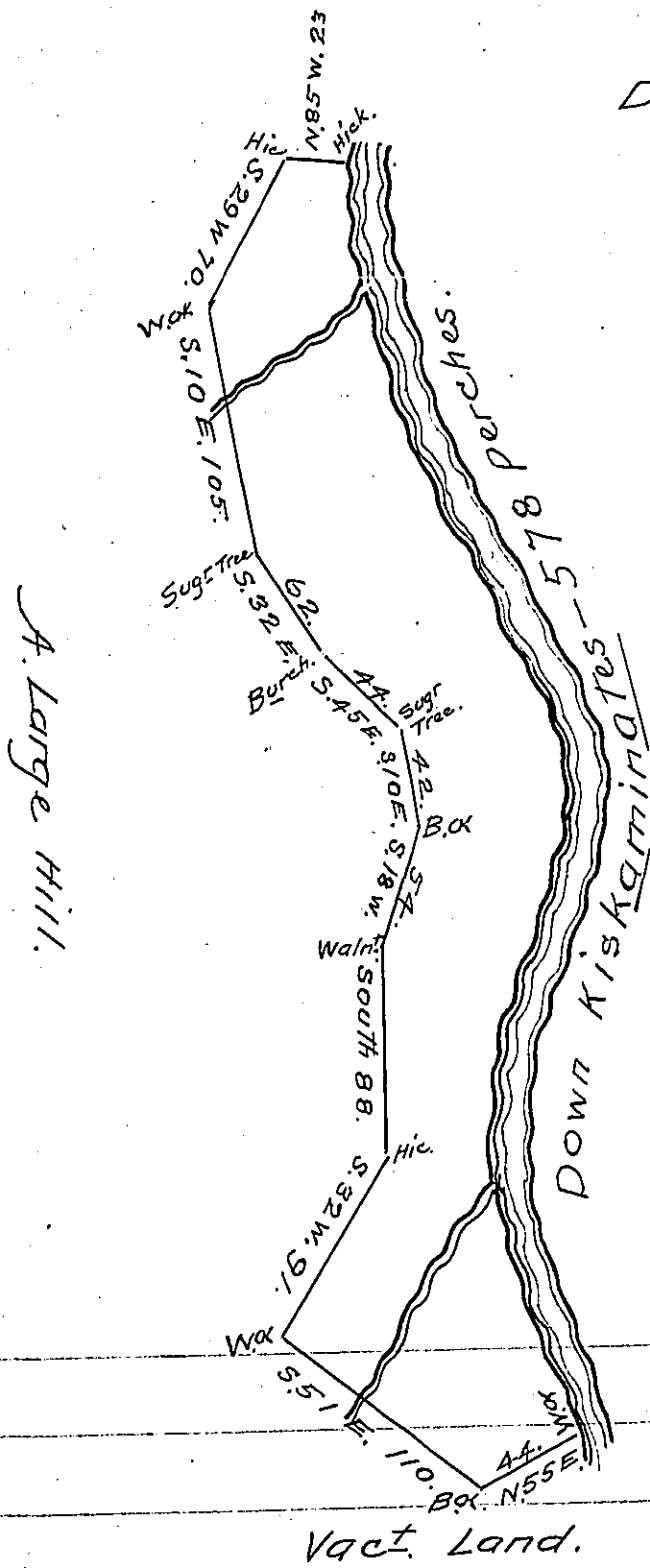


The Several Courses & Distances on the Creek Viz:

N. 18 W.	121 ps.
N. 6 E.	60
N. N. E.	48
N. 18 E.	52
N. 9 W.	43
N. 30 W.	56
N. 24 W.	96
N. 17 W.	72
N. 3 E.	30



John Montgomery Esq  
 & Alex. Stuart.  
 2 1/2<sup>o</sup> & allow<sup>ce</sup>.

Black Legs on the South Side. Surveyed to John Montgomery Esq & Alex. Stuart on the 18<sup>th</sup> Day of March 1769, Containing Two Hundred & Twelve Acres & a half, & the Usual Allowance of six & Ct. & c. Situate on Kiskaminates - about a Mile below the Mouth of Loyalhanna - in Cumberland County By Application of the Ninth Day of Feby. 1769 No 14. &

Joshua Elder DS.

To John Lukens Esq S. Genl.

IN TESTIMONY that the above is a copy of the original remaining on file in the Department of Internal Affairs of Pennsylvania, made conformably to an Act of Assembly approved the 16th day of February, 1833, I have hereunto set my Hand and caused the Seal of said Department to be affixed at Harrisburg, this Thirtieth day of June 1905

*George R. Brown*  
 Secretary of Internal Affairs.